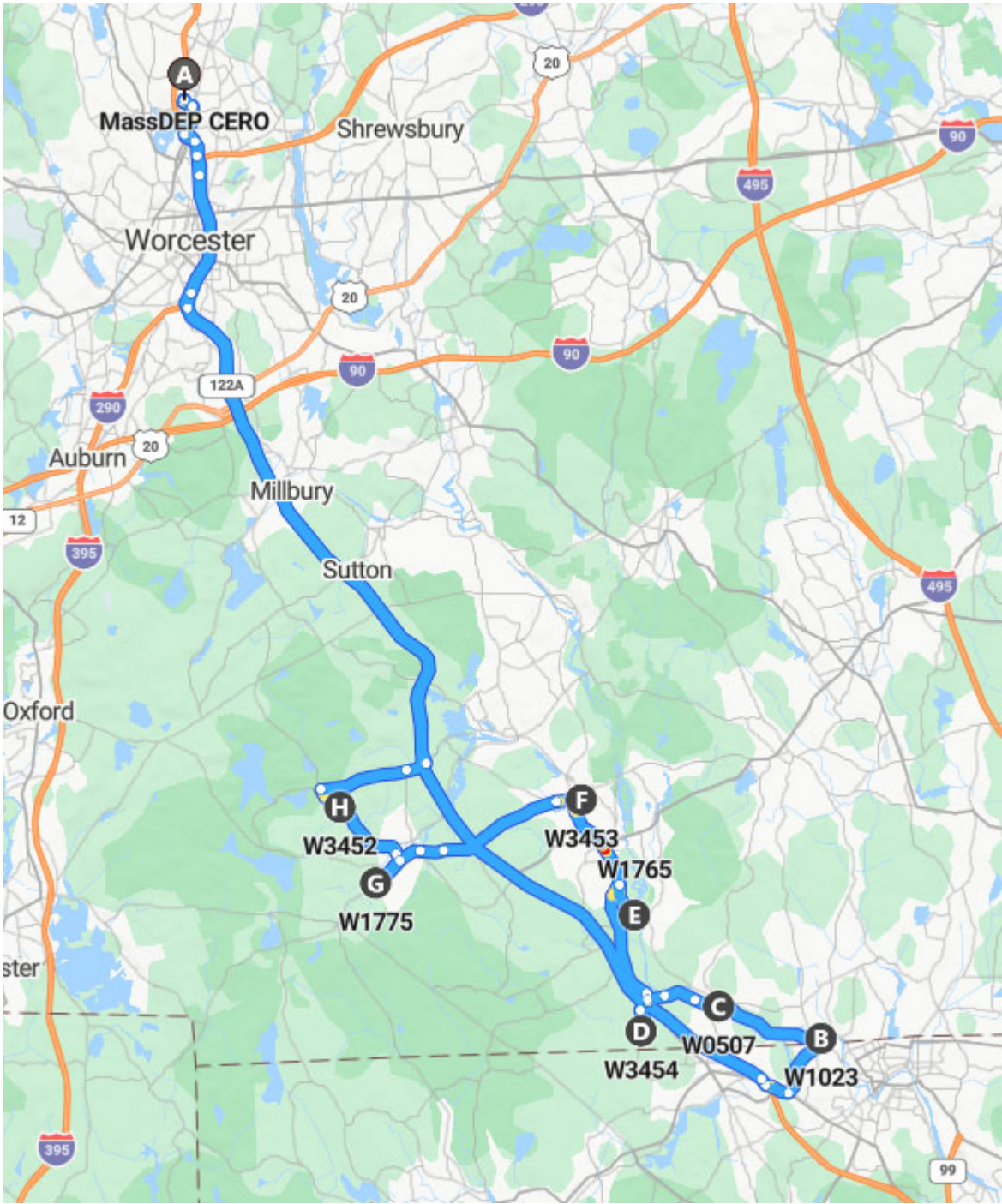


2025 C1-2 Targeted Assessment Monitoring Group 5 Guidebook-Davis





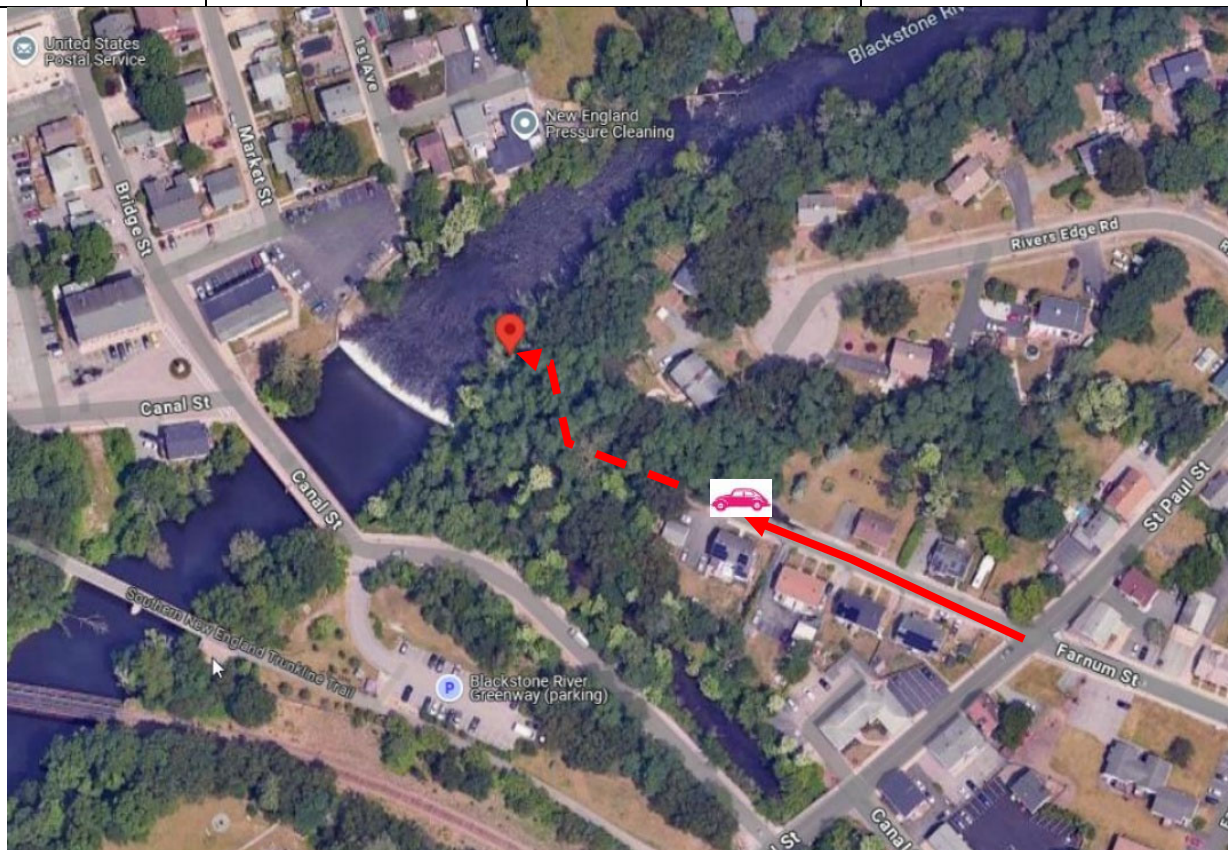
TAM C1-2 Group 5 Route Map





Site List for Guidebooks - Bold and Red is the Group for this Book

UniqueID	StalD	Waterbody	Town	Group	Order	Park Lat	Park Long	Garmin Code
W1021	ML01	Mill River	Hopedale	4	1	42.124906	-71.539037	P41 ML01 Mill River W1021
W1760	MUDDY	Muddy Brook	Mendon	4	2	42.093204	-71.518993	P42 MUDDY Muddy Brook W1760
W2994	ROCKM	Rock Meadow Brook	Mendon	4	3	42.092528	-71.591577	P43 RockM Rock Meadow Brook W2994
W1246	STANLEY	Blackstone River	Uxbridge	4	4	42.079414	-71.619486	P44 STANLEY Blackstone River W1246
W1428	TAFTPOND	Taft Pond Brook	Upton	4	5	42.128628	-71.601414	P45 TaftPond Taft Pond Brook W1428
W1244	B_NORTH	Blackstone River	Northbridge	4	6	42.128778	-71.63742	P46 B_NORTH Blackstone River W1244
W0506	BLK07-A	Blackstone River	Northbridge	4	7	42.153785	-71.65185	P47 BLK07-A Blackstone River W0506
W1023	BS19	Blackstone River	Blackstone	5	1	42.016659	-71.536834	P51 BS19 Blackstone River W1023
W0507	BLK12A	Blackstone River	Millville	5	2	42.02746	-71.581938	P52 BLK12A Blackstone River W0507
W3454	BACON	Bacon Brook	Uxbridge	5	3	42.019007	-71.613521	P53 BACON Bacon Brook W3454
W1765	B_UX	Blackstone River	Uxbridge	5	4	42.05534	-71.616714	P54 B_UX Blackstone River W1765
W3453	TMUM2	Cold Spring Brook	Uxbridge	5	5	42.090621	-71.638332	P55 TMUM2 Cold Spring Brook W3453
W1775	CENTER	Centerville Brook	Douglas	5	6	42.064954	-71.724338	P56 CENTER Centerville Brook W1775
W3452	TMUM1	UNT to Mumford River	Sutton	5	7	42.088655	-71.739435	P57 TMUM1 UNT to Mumford River W3452
W1957	BLIS	Bliss Brook	Rehoboth	6	1	41.885219	-71.26498	P61 Blis Bliss Brook W1957
W2210	TEN	Ten Mile River	Seekonk	6	2	41.8970418	-71.3341829	P62 TEN Ten Mile River W2210
W0173	TM11	Ten Mile River	Attleboro	6	3	41.917405	-71.305393	P63 TM11 Ten Mile River W0173
W3455	SEVEN	Sevenmile River	Attleboro	6	4	41.930622	-71.336323	P64 SEVEN Sevenmile River W3455
W2348	TMR07	Ten Mile River	North Attleborough	6	5	41.98129	-71.329162	P65 TMR07 Ten Mile River W2348
W0170	TM06	Ten Mile River	North Attleborough	6	6	41.960961	-71.307572	P66 TM06 Ten Mile River W0170
W0179	BG02	Bungay River	Attleboro	6	7	41.953791	-71.280345	P67 BG02 Bungay River W0179

Site ID: BLKFARN		Blackstone River		Group 5 Order 1	
Unique ID:		W3491		Decon: No	
Town:		Blackstone		Official lat/long: 42.017103, -71.537623	
				Watershed: Blackstone	
Site Lat / Long		42.017103, -71.537623		Parking Lat / Long 42.016659, -71.536834	
Prioritization Notes: TempID: WAS W1023 Priority: 9 Source: Assessment: X Recon Date/ID: 11/4 and 11/15 2024 29 Site Description Notes					
Parking, Safety & Access Notes: Safety Notes: Careful on site if flows are high. Parking : Park at the end of Farnum Street. Access: Walk into the woods from the end of farnum street.					Parking QR: 
Sampling Notes: Sample at edge of river about 101 feet downstream of the small dam. Flow will impact exact method/location. 42.017094, -71.537622. If the water level is low enough here we could do kick sampling. Whether that is appropriate to assess the segment is a separate question.					Site QR: 
Access	Public		Gradient	Low	
Water Quality	Wade In		Substrate	Rocky	
Probe Deploys	Native		Macroinvertebrate	RBP Kick	
Fish	Unlikely		Fish Crew: 5+ People		







Site ID: BLK12A		Blackstone River		Group 5	Order 2
Unique ID:		W0507		Decon:	No
Town:	Millville	Official lat/long: 42.026761, -71.581277		Watershed:	Blackstone
Site Lat / Long		42.026591, -71.581385`		Parking Lat / Long	42.027460, -71.581938
Prioritization Notes: TempID: W0507 Priority: 9 Source: Assessment: X Recon Date/ID: 11/4 and 11/15 2024 28 Site Description Notes Use Field lat/long for sampling.					
Parking, Safety & Access Notes: Safety Notes: Water can be fast here. Parking : Park at the public municipal lot. Police gave permission on 11/15 Access: Walk east across lawn to Central Street. Head south on central street ACROSS the river and jump the upstream side guardrail to gain access to the right bank of the upstream side of the bridge. You should be sampling the northern branch of the river.					Parking QR: 
Sampling Notes: Sample near bridge. Water can be fast here and can drop off quickly. Use appropriate caution. 42.026583, -71.581436					Site QR: 
Access	Public	Gradient	Low		
Water Quality	Wade In	Substrate	Sand		
Probe Deploys	Anchor Block	Macroinvertebrate	Unlikely		
Fish	Unlikely	Fish Crew: 5+ People			







Walking from parking area along bridge, hop over guardrail and make your way to under bridge.



Site ID: BACON		Bacon Brook		Group 5	Order 3
Unique ID:		W3454		Decon:	No
Town:	Uxbridge	Official lat/long: 42.019007, -71.613521		Watershed:	Blackstone
Site Lat / Long		42.019007, -71.613521`		Parking Lat / Long	42.019007, -71.613521
Prioritization Notes: TempID: T024 Priority: 3 Source: Assessment: X Recon Date/ID: 11/4/2024 27.5 Site Description Notes					
Parking, Safety & Access Notes: Safety Notes: None Parking : Easy parking by fencing. Access: Access upstream side by parking.					Parking QR: 
Sampling Notes: Upstream side.					Site QR: 
Access	Public	Gradient	Moderate/High		
Water Quality	Wade In	Substrate			
Probe Deploys	Native	Macroinvertebrate	RBP Kick		
Fish	Backpack	Fish Crew: 2-3 People			







Site ID: B_UX		Blackstone River		Group 5	Order 4
Unique ID:		W1765		Decon:	YES
Town:	Uxbridge	Official lat/long: 42.054957, -71.616300		Watershed:	Blackstone
Site Lat / Long	42.054957, -71.616300`	Parking Lat / Long	42.055340, -71.616714		
Prioritization Notes: TempID: W1765 Priority: 9 Source: Assessment: X Recon Date/ID: 11/4/2024 27 Site Description Notes					
Parking, Safety & Access Notes: Safety Notes: None Parking : Park at Skull Rock Lock canoe launch. Access: Follow path/steps down to the water (NW side).					Parking QR: 
Sampling Notes: Water level can change here. Steps are steep. Use appropriate caution. For invertebrate work it will likely only be possible during very low flows.					Site QR: 
Access	Public	Gradient	Low		
Water Quality	Wade In	Substrate	Sand		
Probe Deploys	Anchor Block	Macroinvertebrate	Multihabitat		
Fish	Unlikely	Fish Crew: 5+ People			





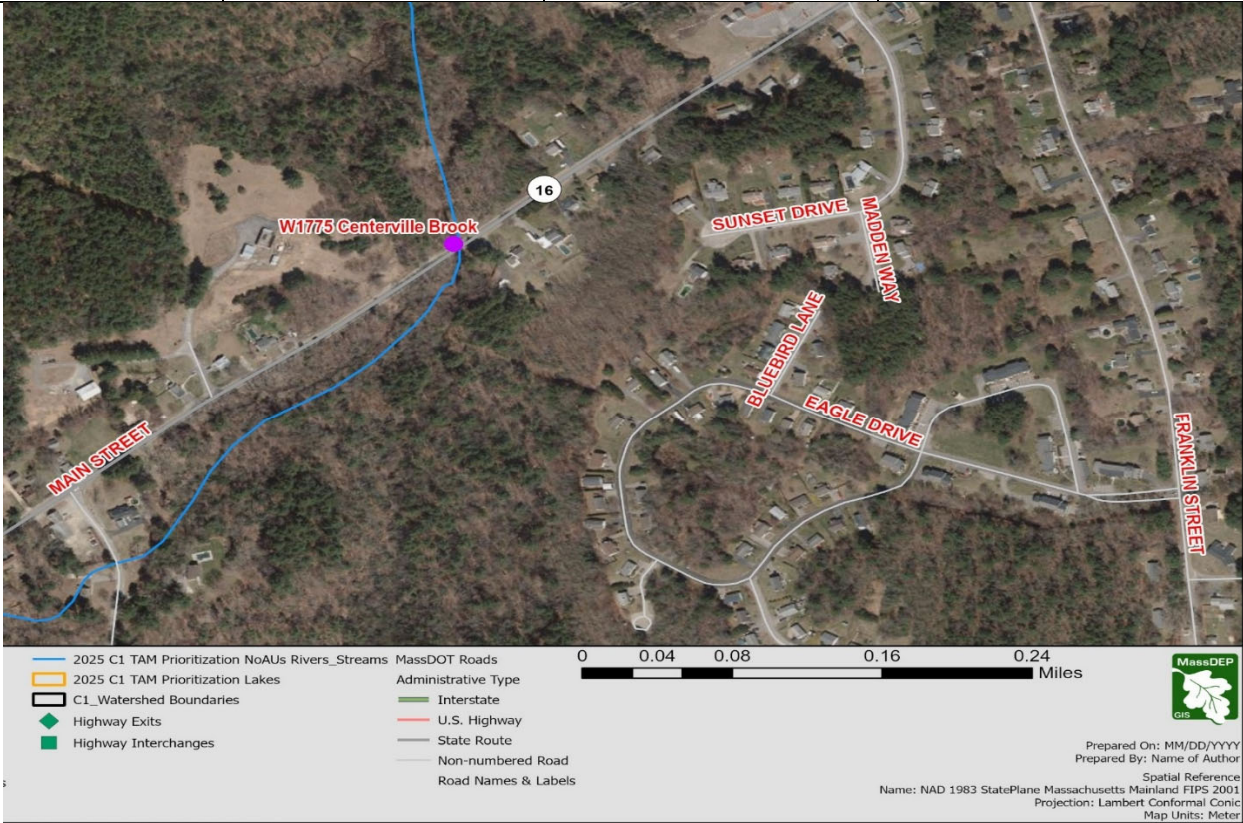


Site ID: TMUM2		Cold Spring Brook		Group 5 Order 5	
Unique ID:		W3453		Decon:	
Town:		Uxbridge		Official lat/long: 42.090435, -71.638193	
				Watershed:	
				Blackstone	
Site Lat / Long		42.090435, -71.638193`		Parking Lat / Long	
				42.090621, -71.638332	
Prioritization Notes: TempID: T035 Priority: 3 Source: Assessment: X Recon Date/ID: 10/31/2024 16					
Site Description Notes					
Parking, Safety & Access Notes: Safety Notes: None Parking : Park at end of Boston Street. Access: Walk down banking in same direction as the road was going until you reach the stream.					Parking QR: 
Sampling Notes: Depending on year there may be a false channel. Check and flag first visit.					Site QR: 
Access	Public		Gradient	Low	
Water Quality	Wade In		Substrate	Sand	
Probe Deploys	Anchor Block		Macroinvertebrate	Multihabitat	
Fish	Backpack		Fish Crew: 2 People		







Site ID: CENTER		Centerville Brook		Group 5	Order 6
Unique ID: W1775				Decon:	No
Town:	Douglas	Official lat/long: 42.064972, -71.724235		Watershed:	Blackstone
Site Lat / Long		42.064972, -71.724235`	Parking Lat / Long		42.064954, -71.724338
Prioritization Notes: TemplID: W1775 Priority: 3 Source: Assessment: X Recon Date/ID: 10/28/2024 9					
Site Description Notes					
Parking, Safety & Access Notes: Safety Notes: Cone may be necessary. Parking : Pull off on wide are near guardrail. Pull over as far as is safe. Road is busy. Take appropriate care. Access: Downstream left side. May need pruners on first visit.					Parking QR: 
Sampling Notes: Downstream left bank (SW Side) seems most likely sample spot.					Site QR: 
Access	Public	Gradient	Low		
Water Quality	Wade In	Substrate	Sand		
Probe Deploys	Anchor Block	Macroinvertebrate	Multihabitat		
Fish	Backpack	Fish Crew: 2-3 People			





Site ID: TMUM1		UNT to Mumford River		Group 5	Order 7
Unique ID:		W3452		Decon:	No
Town:	Sutton	Official lat/long: 42.088457, -71.739159		Watershed:	Blackstone
Site Lat / Long		42.088457, -71.739159`		Parking Lat / Long	42.088655, -71.739435
Prioritization Notes: TempID: T060 Priority: 3 Source: Assessment: X Recon Date/ID: 10/28/2024 11 Site Description Notes					
Parking, Safety & Access Notes: Safety Notes: Parking has a steep slope. Parking : There is a pulovv on the NW side of the stream crossing. Careful if there has been any erosion. Access: Downstream side (same as parking).					Parking QR: 
Sampling Notes: Right bank seems easiest.					Site QR: 
Access	Public	Gradient	Low		
Water Quality	Wade In	Substrate	Sand		
Probe Deploys	Anchor Block	Macroinvertebrate	Multihabitat		
Fish	Backpack	Fish Crew: 2-3 People			

